

# MADE TO LAST

Our MAXIMO

## Consistency through Innovation

At PERI, we believe in achieving a harmonious balance between tradition and development.

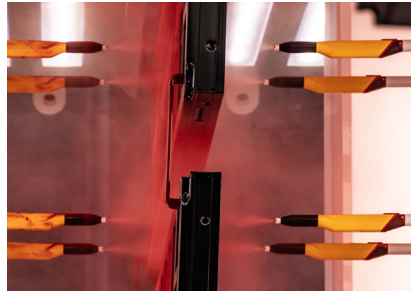
We have taken this one step further without losing sight of reliable approaches, and are now adding even better special features to our tried-and-tested MAXIMO Panel Formwork. Developed for robustness and durability, the innovations include improved handling, more precise results and more efficient work processes.

Discover all the new features now!  
Our MAXIMO: Bringing our customers success in today's and tomorrow's world.





The optimised frame profile impresses with its sophisticated design and high durability. What's more, integrated RFID tags enable comprehensive information capture.



The PERIskin corrosion prevention system protects all of the cavities. In addition, the coating is applied at room temperature to conserve resources.



The new bone profile enables new accessories to be attached in a gridless manner and existing attachments to be used.

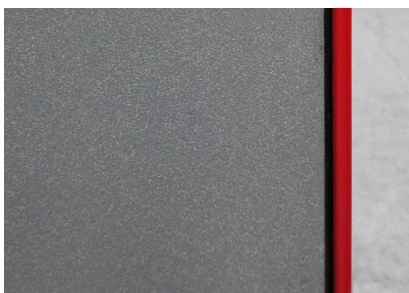
**For decades now, MAXIMO Panel Formwork has been characterised by its extremely efficient handling characteristics and low manpower requirements. The well-established single-sided MX Tie Technology is implemented by just one worker, minimising the manpower required for shuttering. The sophisticated joint and tie pattern creates a harmonious concrete finish to meet the most stringent requirements.**

With the new generation of our MAXIMO Panel Formwork, we are combining the advantages of the current MAXIMO system with enhanced features that make work processes on the construction site safer, more sustainable and more user-friendly.

Because at PERI, we are already thinking about tomorrow today.

### The benefits to you:

- Increased service life and simple cleaning process thanks to the innovative PERIskin coating
- Reduced CO2 footprint in production when using the PERIskin coating compared to standard industry corrosion prevention systems
- Improved positioning of panels of all sizes thanks to ergonomic positioning handle and optimised lifting corner
- The new functional brace provides complete flexibility when fitting the PERI UP Scaffolding Kit
- Quick and easy access to comprehensive product information via integrated RFID tag
- 100% compatibility within the MAXIMO system (panels and accessories)



The new hybrid ROBU B formlining combines the advantages of a wooden formwork panel with those of a polypropylene formlining.



The enlarged surface of the lifting corner allows easier access with the lifting bar, making deshuttering considerably easier.



The new ergonomic positioning handles are spaced at small intervals, providing you with extra grip.