

SKYMAX Reference Setup

182.4 kg
CO_{2e} / Months
of use

Product Carbon Footprint (PCF)



Reference lifetime

15 Years

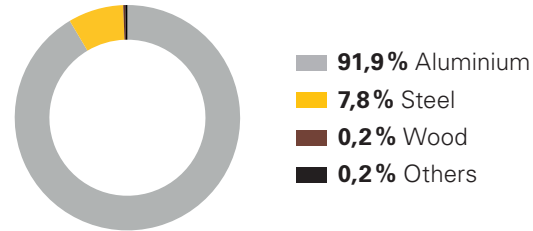
Product weight

6,800 kg

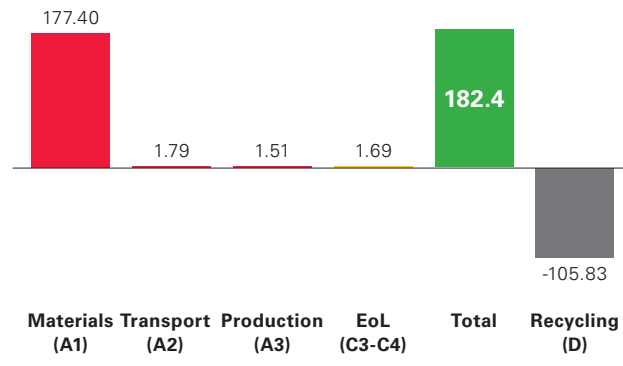
Concreting surface

221 m²

Emissions from raw materials

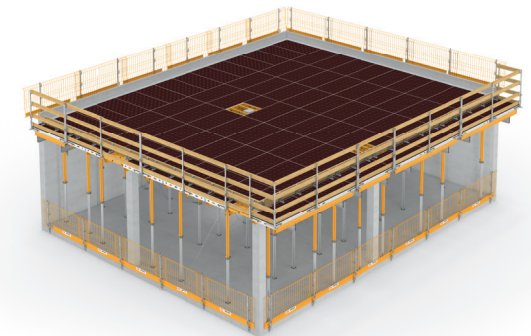


Emissions per life cycle phase



Analyzed products

Name	Quantity (Piece)	GWP (kg CO _{2e})
Panel slab formwork	122	126.9
Support and lowering heads	185	2.5
Fasteners and accessories	39	12.4
Ceiling props	189	35.9



CO₂ calculation – How we create transparency

Origin of materials (A1)

We investigate where our raw materials come from and attach great importance to ensuring sustainable supply chains.



Transport (A2)

We calculate the distances that our products and raw materials cover so that we can estimate their carbon footprint.



Production (A3)

Energy consumption at our factories and the emissions produced are in line with the highest environmental standards.



End of use (C2-C4, D)

When our products are no longer required, we analyse how they can be dismantled, recycled or disposed of.

